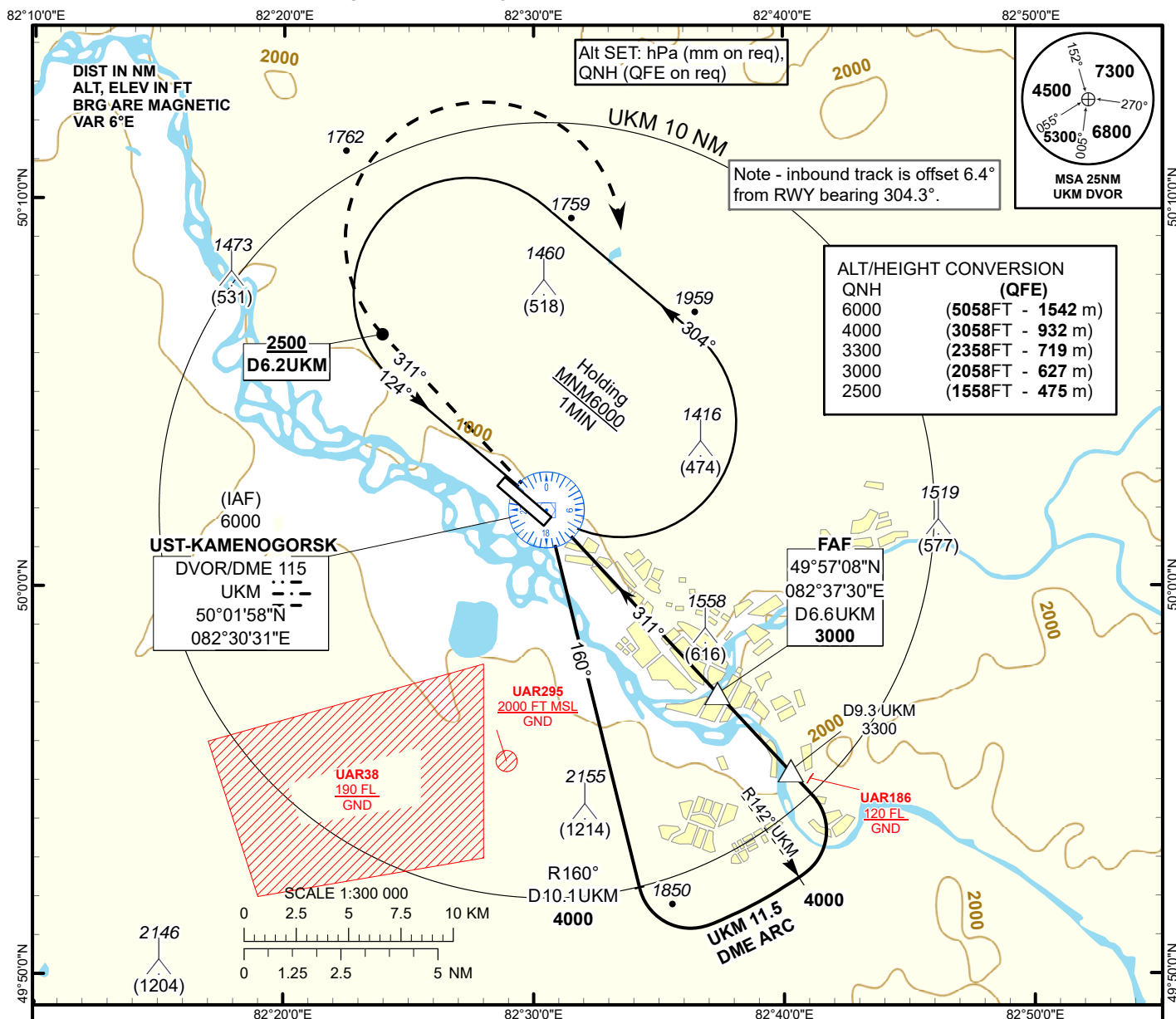


INSTRUMENT APPROACH  
CHART  
ICAO

AERODROME ELEV **942FT**  
THR RWY 30 - ELEV **942FT**  
HEIGHTS RELATED TO AD ELEV

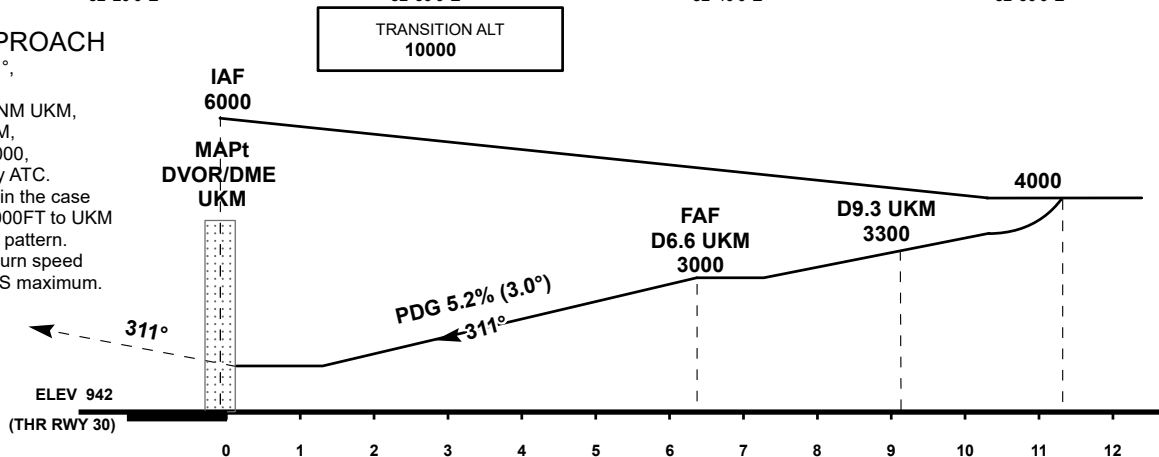
UST-KAMENOGORSK TOWER 130.1  
UST-KAMENOGORSK ATIS (EN) 124.2  
UST-KAMENOGORSK ATIS (RU) 127.7

UST-KAMENOGORSK  
VOR/DME  
RWY 30



MISSED APPROACH

Climb on track 311°, at 2500 or above, outbound to D6.2 NM UKM, turn RIGHT to UKM, Climb initially to 4000, then as directed by ATC. RADIO FAILURE: in the case of RCF climb to 6000FT to UKM and join to holding pattern. Missed approach turn speed limited to 240Kt IAS maximum.



Aircraft Category		A	B	C	D	DIST to THR	NM	6.4	5	4	3	2	1
Straight-in Approach OCA/H						DME UKM	NM	6.6	5.1	4.1	3.1	2.1	1.1
	VOR/DME	1780(840)	1780(840)	1780(840)	1780(840)	ALTITUDE	FT	3000	2583	2265	1947	1628	1310
						HEIGHT	FT	(2058)	(1641)	(1323)	(1005)	(686)	(368)
Aerodrome Operating Minima MDH ft x RVR (CMV)						WARNING							
						1. Priority landing is performed according to pattern.							
						2. Heavy turbulence and wind shear may arise on final.							
	VOR/DME					GS	Kt	80	100	120	140	160	180
						FAF-MAPt(6.6NM)	min:sec	4:53	3:54	3:15	2:47	2:26	2:10
						Desc. Rate( 5.2%)	ft/min	420	530	630	740	840	950

UST-KAMENOGORSK  
VOR/DME

AERONAUTICAL DATA TABULATION

VOR approach to RWY30 from UKM DVOR.	
Fix/point	Coordinates
(IAF) UKM DVOR/DME	50° 01' 58.0"N 082° 30' 31.1"E
(FAF) D6.6 UKM	49° 57' 07.7"N 082° 37' 30.2"E
THR RWY 30	50° 01' 39.20"N 082° 30' 36.13"E
Final approach descent angle is 3°	